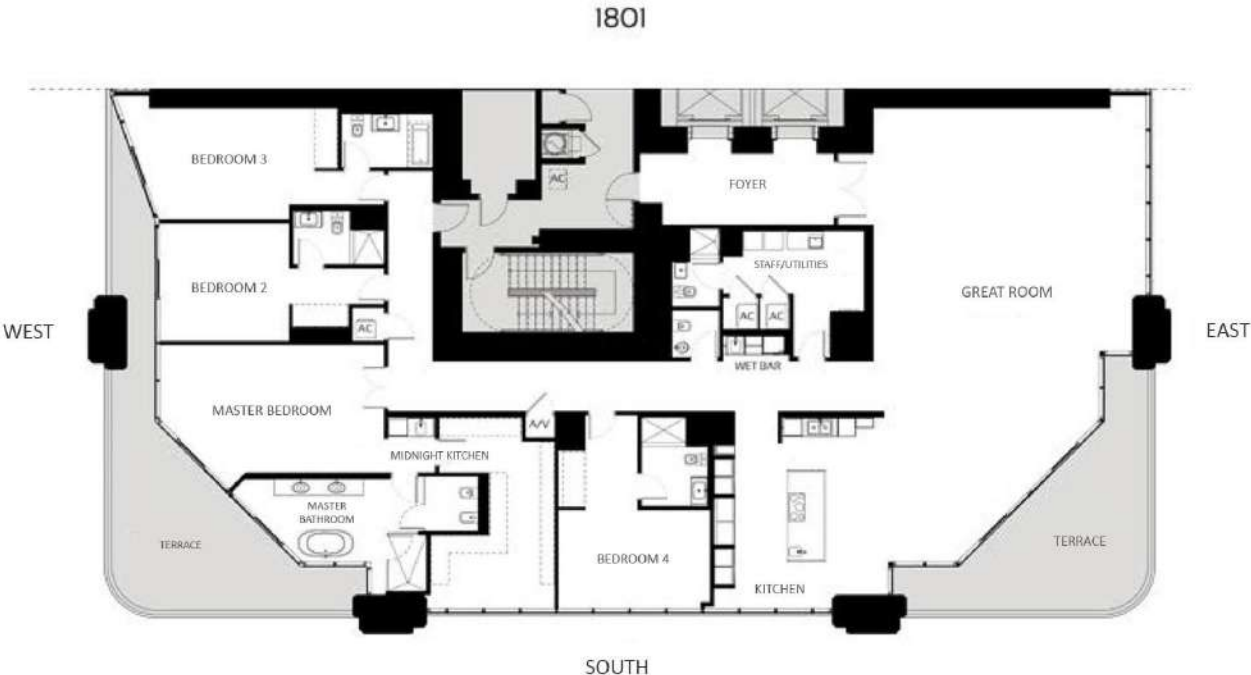


HALF FLOOR RESIDENCES - ZONE 1- LEVELS 15 - 25

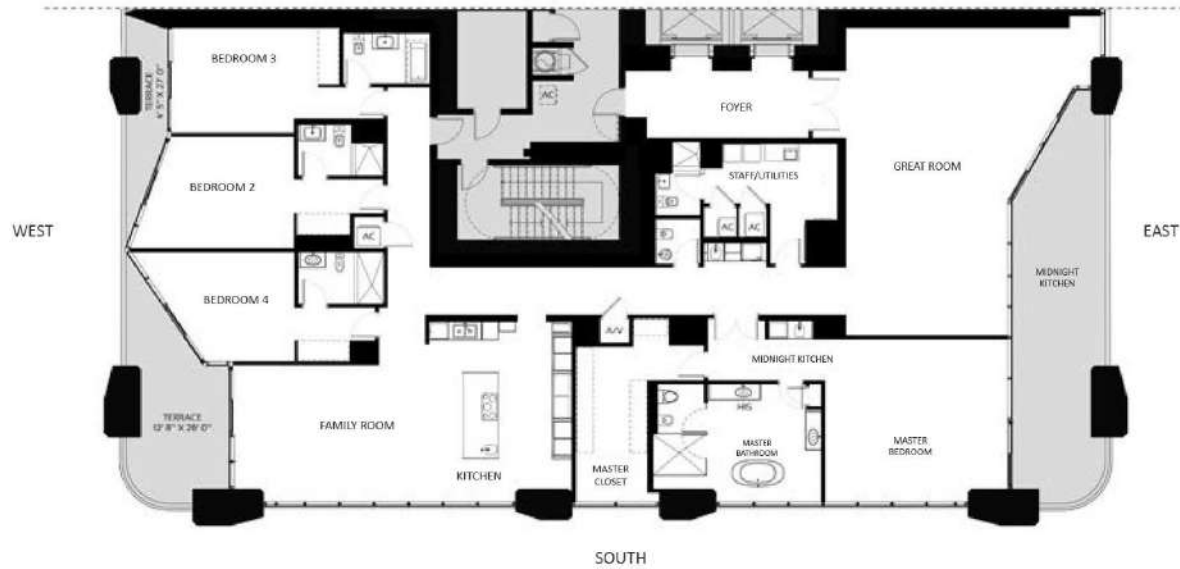


ORAL REPRESENTATIONS CANNOT BE RELIED UPON AS CORRECTLY STATING REPRESENTATIONS OF THE DEVELOPER. FOR CORRECT REPRESENTATIONS, MAKE REFERENCE TO THIS BROCHURE AND TO THE DOCUMENTS REQUIRED BY SECTION 718.503, FLORIDA STATUTES, TO BE FURNISHED BY A DEVELOPER TO A BUYER OR LESSEE.

Use and operation of the subject are conditioned upon obtaining FHA and other governmental approvals. Approval has not yet been obtained. An assurance can be given about whether the approval is to be obtained, and as of the writing of this plan. Measured dimensions are measured to the exterior boundaries of the exterior walls and the centerline of interior dividing walls and do not vary from the dimensions that would be determined by using the description and definition of the "foot" set forth in the Declaration which generally only include the interior spaces between the perimeter walls and exclude interior structural components. Additionally, measurements of rooms set forth on any floor plan are generally taken at the greatest points of clear opening in the room area, a perfect rectangle, without regard for any columns. Accordingly, the area of the actual room will typically be smaller than the product obtained by multiplying the stated length times width. All dimensions are approximate, and all floor plans and development plans are subject to change. This is not intended to be an offer to sell, or solicitation to buy, condominium units in any other jurisdiction where prohibited by law, and your eligibility for purchase will depend upon your state of residency. The offerings are made only by the prospectus for the condominium and no representation should be relied upon if not made in the prospectus. The developer, including its agents, materials, plans, specifications, terms, conditions and statements contained in this brochure are prepared only and the Developer reserves the right to modify, amend or withdraw any or all of them in its sole discretion and without prior notice. These drawings and documents are conceptual only and are for the convenience of reference. They should not be relied upon as representations, express or implied, of the final design of the building, the structure or the amenities. The developer expressly reserves the right to make modifications, omissions, and changes it deems desirable in its sole and absolute discretion. All drawings of Appliances, fixtures, appliances, counters, sinks, floor coverings and other matters of detail, including, without limitation, items of finish and decoration, are conceptual in nature and are not necessarily included in cost. Current floor plan and the Prospectus for the home included with this Unit. The photographs contained in this brochure may be stock photography or have been taken off site. All we used to create the appearance of the subject is for informational purposes only and does not constitute an offer to sell, or solicitation to buy, any real estate. The building is currently under construction and not yet completed. SEE THE OFFICIAL MAPS AVAILABLE FROM THE BUREAU OF COUNTY COMMISSIONERS FOR THE COUNTY OF DADE, FLORIDA.

HALF FLOOR RESIDENCES - ZONE 2 - LEVELS 26 - 33

3101



ORAL REPRESENTATIONS CANNOT BE RELIED UPON AS CORRECTLY STATING REPRESENTATIONS OF THE DEVELOPER. FOR CORRECT REPRESENTATIONS, MAKE REFERENCE TO THIS BROCHURE AND TO THE DOCUMENTS REQUIRED BY SECTION 718.503, FLORIDA STATUTES, TO BE FURNISHED BY A DEVELOPER TO A BUYER OR LESSEE.

Use and operation of the subject are conditioned upon obtaining FHA and other governmental approvals. Approval has not yet been obtained. No assurance can be given about whether the approvals can be obtained, and if so, the timing of same. Stated dimensions are measured to the exterior boundaries of the exterior walls and the location of interior finishing walls and in fact may vary from the dimensions that would be determined by using the description and definition of the "foot" set forth in the Declaration which generally only includes the interior spaces between the perimeter walls and excludes interior structural components. Additionally, measurements of rooms or built-in are those plan are generally taken at the greatest points of clear opening (ie. if the room were a perfect rectangle, without regard for any columns). Accordingly, the area of the actual room will typically be smaller than the product obtained by multiplying the stated length times width. All dimensions are approximate, and all floor plans and development plans are subject to change. This is not intended to be an offer to sell, or solicitation to buy, condominium units in any other jurisdiction where prohibited by law, and your eligibility for purchase will depend upon your state of residency. The drawings are made only by the proponent for the condominium and no representation should be relied upon if not made in the prospectus. The details, renderings, graphs, materials, plans, specifications, terms, conditions and statements contained in the brochure are prepared only, and the Developer reserves the right to modify, amend or withdraw any or all of same in its sole discretion and without prior notice. These drawings and specifications are conceptual only and are for the convenience of reference. They should not be relied upon as representations, express or implied, of the final design of the building, the structure or the amenities. The Developer expressly reserves the right to make modifications, omissions, and changes it deems desirable in its sole and absolute discretion. All aspects of Appliances, fixtures, appliances, closets, walls, floor coverings and other matters of detail, including, without limitation, items of finish and decoration, are conceptual and are not necessarily included in our final. Consult your Agreement and the Prospectus for the items included with the Unit. The photographs contained in this brochure may be stock photography or have been taken off site and we would be pleased to assist the buyer in the selection of the items to be included in the unit. The photographs contained in this brochure may be stock photography or have been taken off site and we would be pleased to assist the buyer in the selection of the items to be included in the unit. The photographs contained in this brochure may be stock photography or have been taken off site and we would be pleased to assist the buyer in the selection of the items to be included in the unit. THE BUYER'S ATTENTION IS DRAWN TO THE FACT THAT THE BUILDING IS CURRENTLY UNDER CONSTRUCTION AND NOT YET COMPLETE. (CIVIL RIGHTS NOTICE) SEE 816.011 (2) AND 816.011 (3) FLORIDA STATUTES FOR THE PROHIBITION OF DISCRIMINATION IN THE SALE OF REAL PROPERTY. THE BUILDING IS CURRENTLY UNDER CONSTRUCTION AND NOT YET COMPLETE.

HALF FLOOR RESIDENCES - ZONE 2 - LEVELS 26 - 33

3102



ORAL REPRESENTATIONS CANNOT BE RELIED UPON AS CORRECTLY STATING REPRESENTATIONS OF THE DEVELOPER. FOR CORRECT REPRESENTATIONS, MAKE REFERENCE TO THIS BROCHURE AND TO THE DOCUMENTS REQUIRED BY SECTION 718.503, FLORIDA STATUTES, TO BE FURNISHED BY A DEVELOPER TO A BUYER OR LESSEE.

Use and operation of the subject are conditional upon obtaining FHA and other governmental approvals. Approval has not yet been obtained. No assurance can be given about whether the approvals will be obtained, and if so, the timing of same. Listed dimensions are measured to the exterior boundaries of the exterior walls and the centerline of interior dividing walls and do not take into consideration that would be determined by using the description and definition of the "foot" set forth in the Declaration which generally only includes the interior spaces between the perimeter walls and excludes interior structural components. Additionally, measurements of rooms set forth on any floor plan are generally taken at the greatest points of clear opening in the room since a perfect rectangle, without regard for any columns. Accordingly, the area of the actual room will typically be smaller than the product obtained by multiplying the stated length times width. All dimensions are approximate, and all floor plans and development plans are subject to change. This is not intended to be an offer to sell, or solicitation to buy, condominium units in any other jurisdiction where prohibited by law, and your eligibility for purchase will depend upon your state of residence. The drawings made only by the proponent for the condominium which representation should be relied upon if set forth in the prospectus. The details, renderings, graphs, materials, plans, specifications, terms, conditions and statements contained in the brochure are prepared only, and the Developer reserves the right to modify, amend or withdraw any or all of same in its sole discretion and without prior notice. These drawings and documents are conceptual only and are for the convenience of reference. They should not be relied upon as representations, express or implied, of the final design of the building, the structure or the amenities. The Developer expressly reserves the right to make modifications, omissions, and changes it deems desirable in its sole and absolute discretion. All depictions of furnishings, fixtures, appliances, fixtures, sinks, floor coverings and other matters of detail, including, without limitation, items of finish and decoration, are illustrative only and are not intended to be included in any final. Consult your Agreement and the Prospectus for the items included with the Unit. The photographs contained in this brochure may be stock photography or have been taken off site and are used to assist the buyer in the design to be purchased. Other than the information that may be presented, and are not intended to be used as a basis for any decision or action in respect thereto. FOR MORE INFORMATION, CONTACT THE DEVELOPER. SEE THE OFFICIAL PUBLICATION AVAILABLE UNDER THE (SM) OR (REG) OF THE (ST). The building is currently under construction but not yet completed.

HALF FLOOR RESIDENCES - ZONE 3 - TYPE A - LEVELS 34 - 49

3901



ORAL REPRESENTATIONS CANNOT BE RELIED UPON AS CORRECTLY STATING REPRESENTATIONS OF THE DEVELOPER. FOR CORRECT REPRESENTATIONS, MAKE REFERENCE TO THIS BROCHURE AND TO THE DOCUMENTS REQUIRED BY SECTION 718.503, FLORIDA STATUTES, TO BE FURNISHED BY A DEVELOPER TO A BUYER OR LESSEE.

Use and operation of the subject are conditioned upon obtaining FHA and other governmental approvals. Approval has not yet been obtained. No assurance can be given about whether the approvals can be obtained, and if so, the timing of same. Stated dimensions are measured to the exterior boundaries of the exterior walls and the location of interior dividing walls and in fact may vary from the dimensions that would be determined by using the description and definition of the "foot" set forth in the Declaration which generally only includes the interior spaces between the perimeter walls and excludes interior components. Additionally, measurements of rooms set forth on any floor plan are generally taken at the greatest points of each space open to the main area, a perfect rectangle, without regard for any columns. Accordingly, the area of the actual room will typically be smaller than the product obtained by multiplying the stated length times width. All dimensions are approximate, and all floor plans and development plans are subject to change. This is not intended to be an offer to sell, or solicitation to buy, condominium units in any other jurisdiction where prohibited by law, and your eligibility for purchase will depend upon your state of residence. The drawings are made only by the contractor for the condominium and no representation should be relied upon if not made in the prospectus. The details, nomenclature, graphics, materials, plans, specifications, terms, conditions and statements contained in this brochure are prepared only, and the Developer reserves the right to modify, amend or withdraw any or all of them in its sole discretion and without prior notice. These drawings and specifications are conceptual only and are for the convenience of reference. They should not be relied upon as representations, express or implied, of the final design of the building, the location or the amenities. The Developer expressly reserves the right to make modifications, omissions, and changes it deems desirable in its sole and absolute discretion. All descriptions of Amenities, Features, Appliances, Closets, Sinks, Floor Coverings and other matters of detail, including, without limitation, items of finish and decoration, are illustrative and are not necessarily included in our Unit, Condominium Agreement and the Prospectus for the Units included with this Unit. The photographs contained in this brochure may be stock photography or have been taken off site and we would like to advise the buyer or the developer to be advised that the site may not be the same as that may be presented, and an aerial photograph as published in the brochure and various other aspects thereof. For all requirements, the COMPLETE CHANGING TIMES, SEE IN A COPY 1. APPLICATION AVAILABLE UNDER THE CAPTION ON FILE IN THE OFFICE OF THE COUNTY CLERK AND COUNTY COMMISSIONER FOR THE COUNTY OF DADE, FLORIDA.

HALF FLOOR RESIDENCES - ZONE 3 - TYPE A - LEVELS 34 - 49

3902



ORAL REPRESENTATIONS CANNOT BE RELIED UPON AS CORRECTLY STATING REPRESENTATIONS OF THE DEVELOPER. FOR CORRECT REPRESENTATIONS, MAKE REFERENCE TO THIS BROCHURE AND TO THE DOCUMENTS REQUIRED BY SECTION 718.503, FLORIDA STATUTES, TO BE FURNISHED BY A DEVELOPER TO A BUYER OR LESSEE.

Use and operation of the subject are conditioned upon obtaining FHA and other governmental approvals. Approval has not yet been obtained. No assurance can be given about whether the approvals can be obtained, and if so, the timing of same. Stated dimensions are measured to the exterior boundaries of the exterior walls and the centerline of interior dividing walls and do not vary from the dimensions that would be determined by using the description and definition of the "foot" set forth in the Declaration which generally only includes the interior spaces between the perimeter walls and excludes interior structural components. Additionally, measurements of rooms set forth on any floor plan are generally taken at the greatest points of each space except for the main areas, a perfect rectangle, without regard for any columns. Accordingly, the area of the actual room will typically be smaller than the product obtained by multiplying the stated length times width. All dimensions are approximate, and all floor plans and development plans are subject to change. This is not intended to be an offer to sell, or solicitation to buy, condominium units in any other jurisdiction which is prohibited by law, and your eligibility for purchase will depend upon your state of residency. The drawings made only by the proponent for the condominium which is proposed should be relied upon if set forth in the prospectus. The details, materials, finishes, materials, plans, specifications, terms, conditions and statements contained on the brochure are prepared only, and the Developer reserves the right to modify, amend or substitute any or all of same in its sole discretion and without prior notice. These drawings and specifications are conceptual only and are for the convenience of reference. They should not be relied upon as representations, express or implied, of the final design of the building, the location or the amenities. The Developer expressly reserves the right to make modifications, omissions, and changes it deems desirable in its sole and absolute discretion. All drawings of Apartments, balconies, terraces, walkways, floor coverings and other matters of detail, including without limitation, items of finish and decoration, are illustrative only and are not necessarily included in cost. Consult your Agreement and the Prospectus for the items included with the Unit. The photographs contained in this brochure may be stock photography or have been taken off site, and we cannot be held responsible for the accuracy of the information contained therein. The information contained in this brochure may be subject to change without notice. For more information, please contact the Developer. THE COMPLETE CHANGES TABLE, SEE IN A COPY 1. APPLICATION AVAILABLE FROM THE OFFICE OF RECORDS (202) 551-1111. The building is currently under construction but not yet completed.

HALF FLOOR RESIDENCES - ZONE 3 - TYPE A - LEVELS 34 - 49

4501



ORAL REPRESENTATIONS CANNOT BE RELIED UPON AS CORRECTLY STATING REPRESENTATIONS OF THE DEVELOPER. FOR CORRECT REPRESENTATIONS, MAKE REFERENCE TO THIS BROCHURE AND TO THE DOCUMENTS REQUIRED BY SECTION 718.503, FLORIDA STATUTES, TO BE FURNISHED BY A DEVELOPER TO A BUYER OR LESSEE.

Use and operation of the building are conditioned upon obtaining FHA and other governmental approvals. Approval has not yet been obtained. No assurance can be given about whether the approvals can be obtained, and/or if so, the timing of same. Stated dimensions are measured to the exterior boundaries of the exterior walls and the centerline of interior dividing walls and in fact may vary from the dimensions that would be determined by using the description and definition of the "foot" set forth in the Declaration which generally only includes the interior spaces between the perimeter walls and excludes interior structural components. Additionally, measurements of rooms set forth on any floor plan are generally taken at the greatest points of clear opening (i.e. the most open, or perfect, rectangles, without regard for any columns). Accordingly, the area of the actual room will typically be smaller than the product obtained by multiplying the stated length times width. All dimensions are approximate, and all floor plans and development plans are subject to change. This is not intended to be an offer to sell, or solicitation to buy, condominium units in any other jurisdiction where prohibited by law, and your eligibility to purchase will depend upon your state of residence. The drawings are made only by the proponent for the condominium and no representation should be relied upon if not made in the prospectus. The details, nomenclature, graphics, materials, plans, specifications, terms, conditions and statements contained in this brochure are prepared only, and the Developer reserves the right to modify, amend or substitute any or all of same in its sole discretion and without prior notice. These drawings and specifications are conceptual only and are for the convenience of reference. They should not be relied upon as representations, express or implied, of the final design of the building, the construction or the amenities. The Developer expressly reserves the right to make modifications, omissions, and changes it deems desirable in its sole and absolute discretion. All descriptions of Amenities, Features, Appliances, Fixtures, Sinks, Scaffs, Floor Coverings and other matters of detail, including, without limitation, items of finish and decoration, are illustrative only and are not necessarily included in cost. Consult your Agreement and the Prospectus for the items included with the Unit. The photographs contained in this brochure may be stock photography or have been taken off site, and we would like to request the assistance of our advertising firm to ensure that the photographs are as representative as possible and the color and colors are as accurate as possible. For more information, please contact the developer. THE DEVELOPER'S OFFICE IS LOCATED AT 11111 N. WINDY HILLS BLVD., SUITE 1000, DALLAS, TEXAS 75243. THE BUILDING IS CURRENTLY UNDER CONSTRUCTION AND NOT YET COMPLETE.

HALF FLOOR RESIDENCES - ZONE 3 - TYPE A - LEVELS 34 - 49

4502

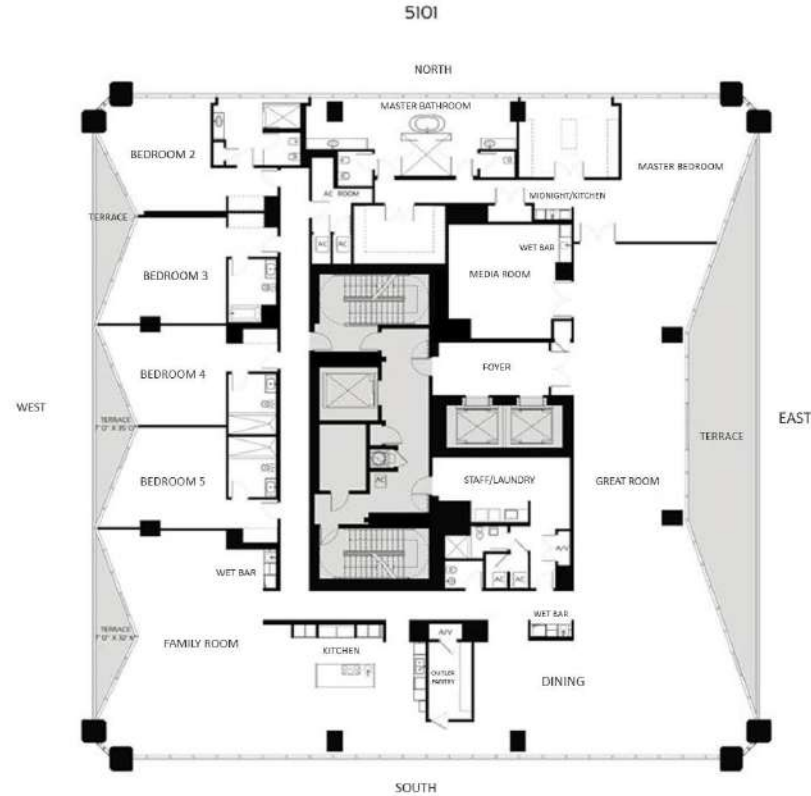
NORTH



ORAL REPRESENTATIONS CANNOT BE RELIED UPON AS CORRECTLY STATING REPRESENTATIONS OF THE DEVELOPER. FOR CORRECT REPRESENTATIONS, MAKE REFERENCE TO THIS BROCHURE AND TO THE DOCUMENTS REQUIRED BY SECTION 718.503, FLORIDA STATUTES, TO BE FURNISHED BY A DEVELOPER TO A BUYER OR LESSEE.

Use and operation of the subject are conditioned upon obtaining FHA and other governmental approvals. Approval has not yet been obtained. No assurance can be given about whether the approvals can be obtained, and if so, the timing of same. Stated dimensions are measured to the exterior boundaries of the exterior walls and the centerline of interior dividing walls and do not vary from the dimensions that would be determined by using the description and definition of the "foot" set forth in the Declaration which generally only includes the interior spaces between the perimeter walls and excludes interior structural components. Additionally, measurements of rooms set forth on any floor plan are generally based on the greatest points of each space except for the dimensions of perfect rectangles, without regard for any circular. Accordingly, the area of the actual room will typically be smaller than the product obtained by multiplying the stated length times width. All dimensions are approximate, and all floor plans and development plans are subject to change. This is not intended to be an offer to sell, or solicitation to buy, condominium units in any other jurisdiction where prohibited by law, and your eligibility to purchase will depend upon your state of residence. The drawings made only by the proponent for the condominium which representation should be relied upon if set forth in the prospectus. The details, nomenclature, graphics, materials, plans, specifications, terms, conditions and statements contained in the brochure are prepared only, and the Developer reserves the right to modify, amend or withdraw any or all of same in its sole discretion and without prior notice. These drawings and specifications are conceptual only and are for the convenience of reference. They should not be relied upon as representations, express or implied, of the final design of the building, the construction or the amenities. The Developer expressly reserves the right to make modifications, omissions, and changes to items described in its site and siteable description. All descriptions of amenities, features, appliances, fixtures, finishes, floor coverings and other matters of detail, including without limitation, items of finish and decoration, are illustrative only and are not necessarily included in each unit. Consult your Agreement and the Prospectus for the items included with the Unit. The photographs contained in this brochure may be stock photography or have been taken off site, and we would not warrant the quality of the photographs. All measurements, floor plans and other information are approximate and do not constitute an offer to sell or lease. For more information, please contact the Developer. THE COMPLETE CHANGING TIMES, SEE IN A COPY 1.1. APPLICATION AVAILABLE UNDER THE CHANGING TIMES (CP) 1.1.1. The building is currently under construction but not yet completed.

FULL FLOOR PENTHOUSES - ZONE 4 - LEVELS 50 - 57

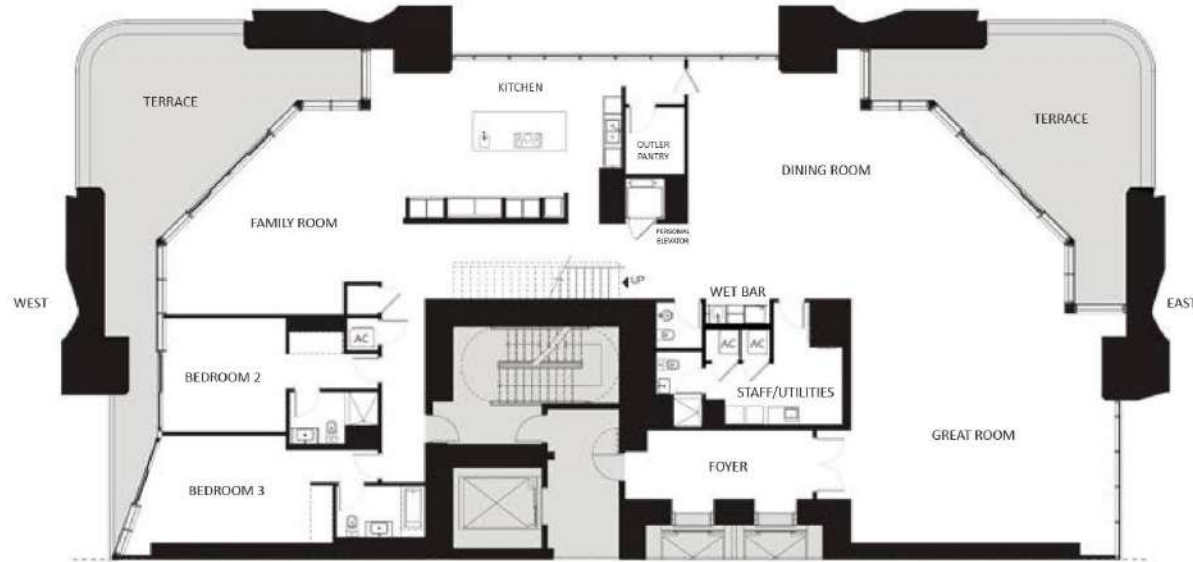


ORAL REPRESENTATIONS CANNOT BE RELIED UPON AS CORRECTLY STATING REPRESENTATIONS OF THE DEVELOPER. FOR CORRECT REPRESENTATIONS, MAKE REFERENCE TO THIS BROCHURE AND TO THE DOCUMENTS REQUIRED BY SECTION 718.503, FLORIDA STATUTES, TO BE FURNISHED BY A DEVELOPER TO A BUYER OR LESSEE.

Use and operation of the building are conditioned upon obtaining FHA and other governmental approvals. Approval has not yet been obtained. No assurance can be given about whether the approvals can be obtained, and/or if so, the timing of same. Listed dimensions are measured to the exterior boundaries of the exterior walls and the location of interior dividing walls and in fact may vary from the dimensions that would be determined by using the description and definition of the "Unit" set forth in the Declaration which generally only includes the interior spaces between the perimeter walls and excludes interior structural components. Additionally, measurements of rooms set forth on this floor plan are generally taken on the greatest points of each space except for the main areas in perfect rectangles, without regard for any columns. Accordingly, the area of the actual room will typically be smaller than the product obtained by multiplying the stated length times width. All dimensions are approximate, and all floor plans and development plans are subject to change. This is not intended to be an offer to sell, or solicitation to buy, condominium units in any other jurisdiction where prohibited by law, and your eligibility to purchase will depend upon your state of residence. The drawings made only by the proponent for the condominium which is herein represented should be relied upon if set forth in the prospectus. The details, renderings, graphics, materials, plans, specifications, terms, conditions and statements contained in this brochure are prepared only, and the Developer reserves the right to modify, amend or substitute any or all of them in its sole discretion and without prior notice. These drawings and specifications are conceptual only and are for the convenience of reference. They should not be relied upon as representations, express or implied, of the final design of the building, the location or the amenities. The Developer expressly reserves the right to make modifications, omissions, and changes it deems desirable in its sole and absolute discretion. All descriptions of Amenities, features, appliances, fixtures, finishes, fixtures, materials and other matters depicted, including without limitation, items of finish and decoration, are conceptual and are not necessarily included in cost. Consult your Agreement and Prospectus for the terms included with the Unit. The photographs contained in this brochure may be stock photography or have been taken off site, and we would appreciate the opportunity to be informed of any other requirements that may be presented to us by the buyer or the lender and to provide the buyer and the lender with the appropriate information. For more information, please contact the sales representative. SEE THE OFFICIAL PUBLICATION AVAILABLE UNDER THE (BANK OF FLORIDA) CP-95111. The building is currently under construction and not yet completed.

TOWNHOUSE RESIDENCES - LEVELS 10 - 14

1002 LOWER LEVEL



ORAL REPRESENTATIONS CANNOT BE RELIED UPON AS CORRECTLY STATING REPRESENTATIONS OF THE DEVELOPER. FOR CORRECT REPRESENTATIONS, MAKE REFERENCE TO THIS BROCHURE AND TO THE DOCUMENTS REQUIRED BY SECTION 718.503, FLORIDA STATUTES, TO BE FURNISHED BY A DEVELOPER TO A BUYER OR LESSEE.

Use and operation of the subject are conditioned upon obtaining FHA and other governmental approvals. Approval has not yet been obtained. No assurance can be given about whether the approvals can be obtained, and if so, the timing of same. Stated dimensions are measured to the exterior boundaries of the exterior walls and the location of interior dividing walls and in fact may vary from the dimensions that would be determined by using the description and definition of the "foot" set forth in the Declaration which generally only includes the interior spaces between the perimeter walls and excludes interior structural components. Additionally, measurements of rooms set forth on any floor plan are generally taken at the greatest points of each space except for the main areas of perfect rectangles, without regard for any columns. Accordingly, the area of the actual room will typically be smaller than the product obtained by multiplying the stated length times width. All dimensions are approximate, and all floor plans and development plans are subject to change. This is not intended to be an offer to sell, or solicitation to buy, condominium units in any other jurisdiction where prohibited by law, and your eligibility to purchase will depend upon your state of residency. The drawings to be made only by the proponent for the condominium which representation should be relied upon if set forth in the prospectus. The details, renderings, graphics, materials, plans, specifications, terms, conditions and statements contained on this brochure are prepared only, and the Developer reserves the right to modify, amend or substitute any or all of same in its sole discretion and without prior notice. These drawings and specifications are conceptual only and are for the convenience of reference. They should not be relied upon as representations, express or implied, of the final design of the building, the location or the amenities. The Developer expressly reserves the right to make modifications, omissions, and changes to items described in its site and structure description. All aspects of Appliances, fixtures, appliances, closets, walls, floor coverings and other matters of detail, including, without limitation, items of finish and decoration, are illustrative only and are not necessarily included in our plan. Consult your Agreement and the Prospectus for the items included with the Unit. The photographs contained in this brochure may be stock photography or have been taken off site, and we would like to assure the reader that the photos do not represent the actual appearance of the building or the actual and intended appearance thereof. For any questions, the developer (CHRYSLER FINANCIAL GROUP) is available under THE (FIRM OR BLDG) (CPS) (S1). The building is currently under construction and not yet completed.

